



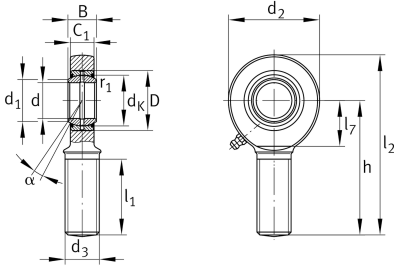
GAR20-DO

Rod end

Schaeffler ID:
0066340280000

Rod end with external thread, right hand thread, requiring maintenance, sliding contact surface: steel/steel, DIN ISO 12240-4, dimension series E, type M, open

Technical information



Main Dimensions & Performance Data

d	20 mm	Bore diameter bearing
D	35 mm	Outside diameter bearing
B	16 mm	Width inner ring
C _r	29,600 N	Basic dynamic load rating, radial
C _{0r}	75,600 N	Basic static load rating, radial
	0.327 kg	Weight

Dimensions

d _K	29 mm	Ball diameter
d ₁	24.1 mm	Outer flange diameter inner ring
d ₂	53 mm	Outer eye diameter
d ₃	M20x1,5	Thread size
h	78 mm	Shank Length External thread rod
C ₁	13 mm	Width of the rod end
α	9 °	Tilt angle
l ₁	43 mm	Shank Length External thread head
l ₂	104.5 mm	Total length external thread head
l ₇	27 mm	Distance drilling with/shaft start
G _r	0,03 - 0,082 mm	Radial Clearance
d _{OT}	0 mm	Bore diameter bearing, upper tolerance
d _{UT}	-0.01 mm	Bore diameter bearing, lower tolerance
B _{OT}	0 mm	Width inner ring, upper tolerance
B _{UT}	-0.12 mm	Width inner ring, lower tolerance

Mounting dimensions

r _{1smin}	0.3 mm	Edge Spacing
--------------------	--------	--------------

Temperature range

T _{min}	-60 °C	Operating temperature min.
T _{max}	200 °C	Operating temperature max.